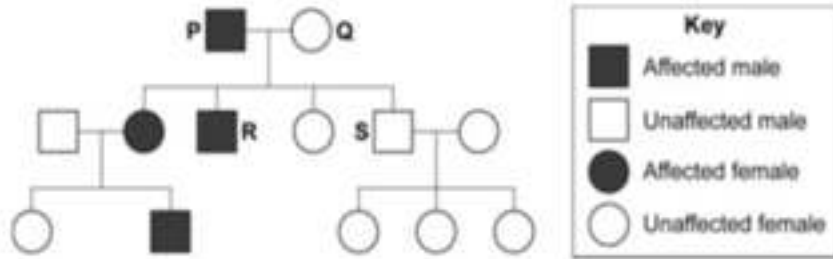


0 1

Sometimes babies are born with extra fingers as shown in the diagram.

This condition is called polydactyly.



The diagram also shows the inheritance of polydactyly in a family.

Polydactyly is caused by a dominant allele, **D**.

The recessive allele of the gene is represented by **d**.

0 1

1

Use **one** genetic diagram to show the inheritance of the polydactyly gene by **R** and **S**.

[4 marks]