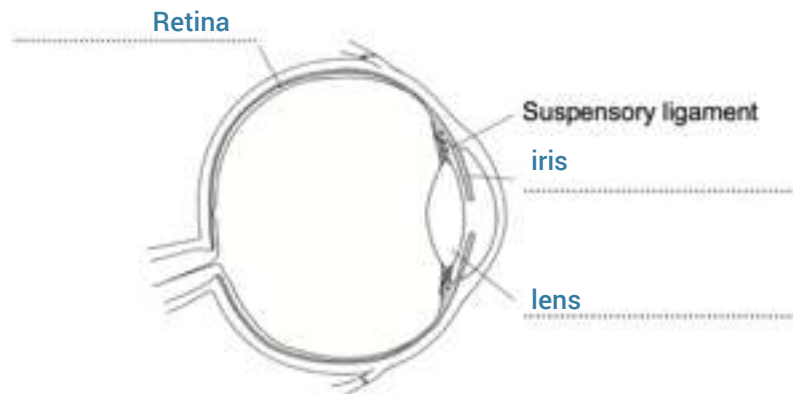


0	1
---	---

Below is a diagram of the eye.



0	1	.	1
---	---	---	---

Label the parts shown by filling in the blank spaces

[3 marks]

Describe the process of adaptation, the pupil reflex to help you see in dim light.

[4 marks]

(in dim light) receptors detect low light levels [1]
 electrical impulse is sent along neurones [1]
 causes radial muscles in iris to contract/circular muscles in iris to relax [1]
 pupil gets wider [1]

0	1	.	3
---	---	---	---

State the name of the process that changes the shape of the lens

[1 mark]

accommodation [1]

0	1	.	4
---	---	---	---

Compare myopia and hyperopia and describe how both can be corrected

[6 marks]

myopia

short sighted/can't see or focus on distant objects [1]
 lens is too curved/long eyeball [1]
 corrected with (glasses that have a) concave lens [1]

hyperopia

long sighted/can't see or focus on near objects [1]
 lens is too thin/short eyeball [1]
 corrected with (glasses that have a) convex lens [1]