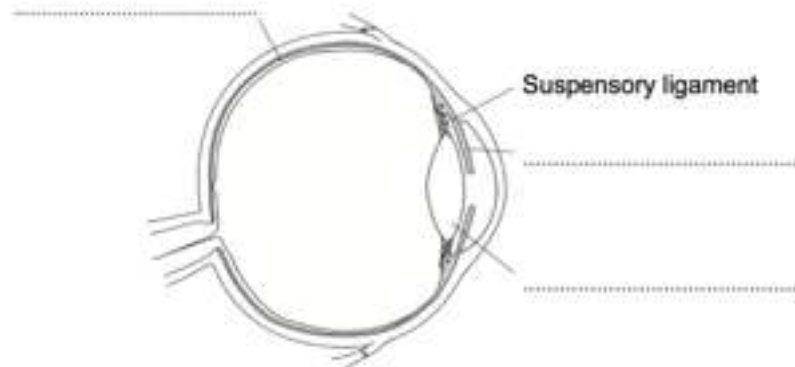


0	1
---	---

Below is a diagram of the eye.



0	1	.	1
---	---	---	---

Label the parts shown by filling in the blank spaces

[3 marks]

0	1	.	2
---	---	---	---

Describe the process of adaptation, the pupil reflex to help you see in dim light.

[4 marks]

0	1	.	3
---	---	---	---

State the name of the process that changes the shape of the lens

[1 mark]

0	1	.	4
---	---	---	---

Compare myopia and hyperopia and describe how both can be corrected

[6 marks]
