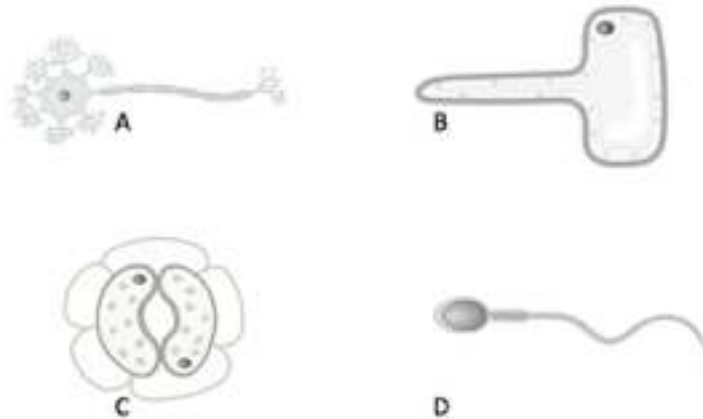


0	1	1
---	---	---

Figure 1 shows some specialised cells



Which 2 cells are found in plants? Write the letters of the 2 cells in the boxes below: [2 Marks]

B
---

C
---

0	1	2
---	---	---

Write the letters of the cell above, that;

Is adapted for absorption of water and mineral ions

B
---

Is adapted to receive and transmit electrical impulses

A
---

[2 Marks]

0	1	3
---	---	---

Cell D is adapted to fertilise an egg. Describe 2 adaptations a sperm cell has to do its job

Adaptation 1: **acrosome: contains enzymes to digest a path through to the egg**

**OR: haploid nucleus/nucleus contains half the chromosome number/23: so a full set/diploid number/46 can be formed at fertilisation**

Adaptation 2: **many mitochondria: to transfer or release energy to move tail**

**OR: Tail/flagellum: to help sperm swim to the egg**

[2 Marks]

0 2 . 1

Figure 2 show the digestive system

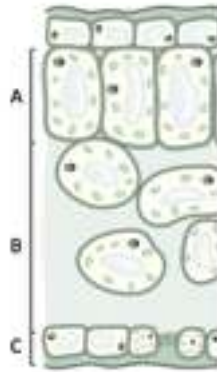


Complete the table below by ticking the structure of the digestive system is an organ, organ system, or a tissue [3 Marks]

Structure	Tissue	Organ	Organ System
stomach		Y	
small and large intestine, stomach, oesophagus, pancreas			Y
cells lining the stomach	Y		

0 2 . 2

Figure 3 shows a part of a plant



a) Is part A in **Figure 3** part of a **tissue**, organ or organ system? Circle the correct answer [1 Mark]

b) Define what is meant by an organ

A group of tissues working together for a similar purpose \_\_\_\_\_

[1 Mark]

