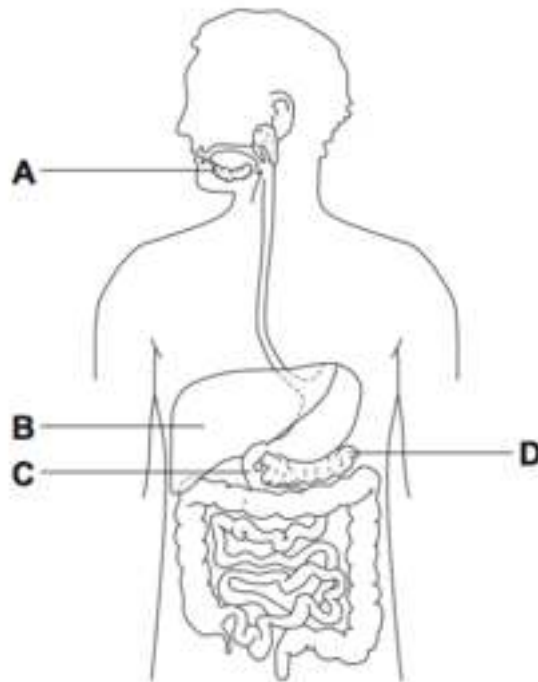


0	1		1
---	---	--	---

The diagram gives information about some parts of the human digestive system.



Name the parts of the digestive system labelled A, B and D (C is labelled for you).

A Salivary gland \_\_\_\_\_

B Liver \_\_\_\_\_

C Duodenum

D Pancreas \_\_\_\_\_

[3 marks]

0	1		2
---	---	--	---

a) Name the organ that produces bile Liver \_\_\_\_\_

[1 mark]

b) Describe 2 ways bile helps to speed up the digestion of fats/lipids

1: emulsifies fats (allowing fats to mix with water)/increases their surface

area \_\_\_\_\_

2: neutralises (the acidity of food from the stomach)/creates optimal pH

conditions for lipase/enzyme \_\_\_\_\_

**[2 marks]**

0	1		3
---	---	--	---

A student has eaten some chicken for lunch. The chicken contains protein.  
Describe how the protein is digested

protease enzyme [1] ; breaks protein down into amino acids [1]

(protease) enzyme made in the stomach/pancreas/small intestine [1];

protein broken down in the stomach and small intestine [1]

protease in the stomach works best/optimally in acidic conditions [1]

**[3 marks]**

**TOP TIP :** The parts of the mark scheme in brackets are not needed for the mark