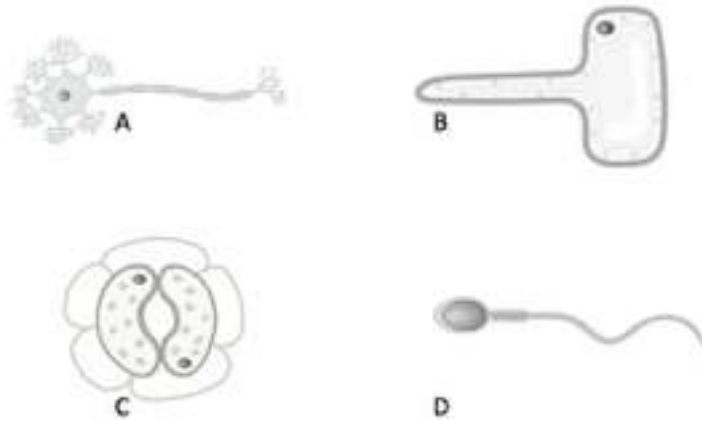


0	1	1
---	---	---

Figure 1 shows some specialised cells



Which 2 cells are found in plants? Write the letters of the 2 cells in the boxes below: **[2 Marks]**

0	1	2
---	---	---

Write the letters of the cell above, that;

Is adapted for absorption of water and mineral ions

Is adapted to receive and transmit electrical impulses

[2 Marks]

0	1	3
---	---	---

Cell D is adapted to fertilise an egg. Describe 2 adaptations a sperm cell has to do its job

Adaptation 1: _____

Adaptation 2: _____

[2 Marks]

0	2	.	1
---	---	---	---

Figure 2 show the digestive system

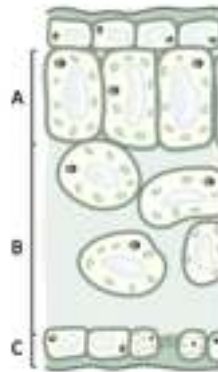


Complete the table below by ticking the structure of the digestive system is an organ, organ system, or a tissue **[3 Marks]**

Structure	Tissue	Organ	Organ System
stomach			
small and large intestine, stomach, oesophagus, pancreas			
cells lining the stomach			

0	2	.	2
---	---	---	---

Figure 3 shows a part of a plant



a) Is part A in **Figure 3** part of a tissue, organ or organ system? Circle the correct answer **[1 Mark]**

b) Define what is meant by an organ

[1 Mark]

