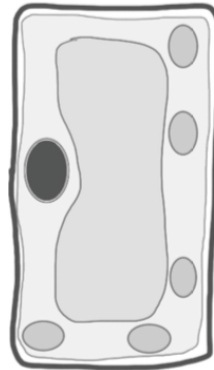


0	1
---	---

Figure 1 shows a plant cell

Figure 1



Plant Cell

0	1	.	1
---	---	---	---

a) Name the part of the plant cell that controls the passage of substances into and out of the cell.

b) Contains cell sap

c) contains a pigment that traps light for photosynthesis

[3 marks]

0	1	.	2
---	---	---	---

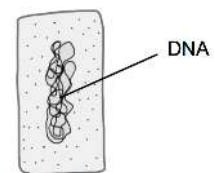
The length of 3 plant cells like the one in Figure 1 was measured using a microscope. Cell 1 measured 71 micrometers; cell 2 measured 78 micrometers and cell 3 measured 68 micrometers. Calculate the average length of these cells. Show clearly how you worked this out

[2 marks]

_____ Average diameter = _____ micrometers

0	1		3
---	---	--	---

Figure 2 shows a bacterial cell which is an example of a prokaryotic cell



Bacterial Cell

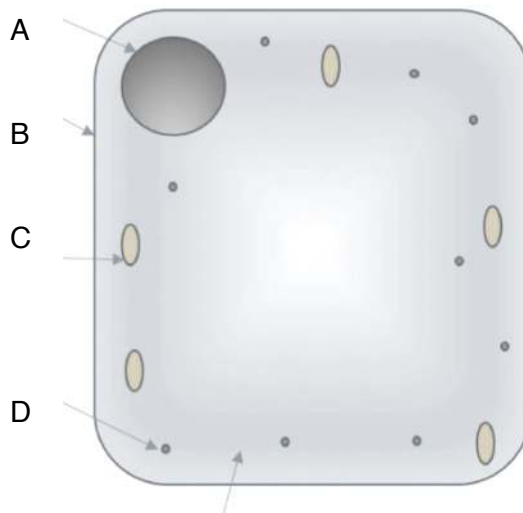
Figure 2

Describe 2 ways how bacterial cells are different from eukaryotic cells

[2 marks]

0	1	.	4
---	---	---	---

Figure 3 shows an animal cell



For each of the letters below, name the structure in Figure 3 and describe its function in the cell

A _____

B _____

C _____

D _____

[4 Marks]