

Please write clearly in block capitals.

Centre number

--	--	--	--	--

Candidate number

--	--	--	--

Surname

---

Forename(s)

---

Candidate signature

---

# GCSE COMBINED SCIENCE: TRILOGY

# H

Higher Tier  
Biology Paper 1H

Tuesday 15 May 2018

Afternoon

Time allowed: 1 hour 15 minutes

## Materials

For this paper you must have:

- a ruler
- a scientific calculator.

## Instructions

- Use black ink or black ball-point pen.
- Fill in the boxes at the top of this page.
- Answer **all** questions in the spaces provided.
- Do all rough work in this book. Cross through any work you do not want to be marked.
- In all calculations, show clearly how you work out your answer.

## Information

- The maximum mark for this paper is 70.
- The marks for questions are shown in brackets.
- You are expected to use a calculator where appropriate.
- You are reminded of the need for good English and clear presentation in your answers.

For Examiner's Use	
Question	Mark
1	
2	
3	
4	
5	
6	
<b>TOTAL</b>	



0 1

This question is about cell structures.

0 1 . 1

Draw **one** line from each cell structure to the type of cell where the structure is found.**[2 marks]****Cell Structure****Type of cell where the  
structure is found**

Nucleus

Prokaryotic cells

Permanent vacuole

Plant cells only

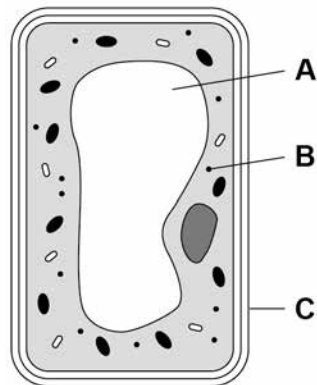
Plasmid

Eukaryotic cells



0 1 . 2 **Figure 1** shows a plant cell.

**Figure 1**



What are the names of structures **A**, **B** and **C**?

[1 mark]

Tick **one** box.

Structure A	Structure B	Structure C
Chloroplast	Vacuole	Cell wall
Nucleus	Chloroplast	Cell membrane
Vacuole	Mitochondrion	Cell membrane
Vacuole	Ribosome	Cell wall

Four empty square boxes for marking the correct answer, one for each row of the table.

**Question 1 continues on the next page**

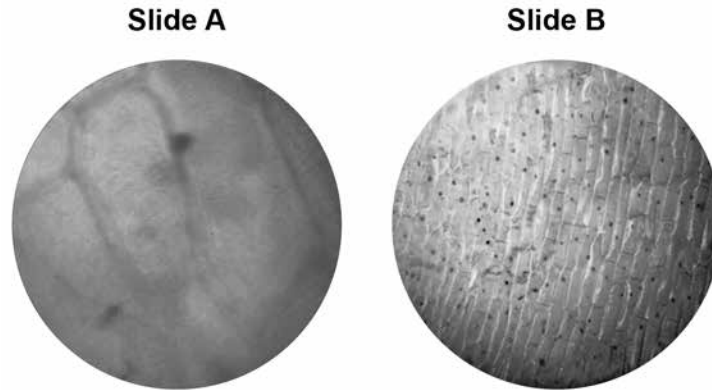
**Turn over ►**



A student observed slides of onion cells using a microscope.

**Figure 2** shows two of the slides the student observed.

**Figure 2**



The cells on the slides are **not** clear to see.

0 1 . 3

Describe how the student should adjust the microscope to see the cells on **Slide A** more clearly.

[1 mark]

---

---

0 1 . 4

Describe how the student should adjust the microscope to see the cells on **Slide B** more clearly.

[2 marks]

---

---

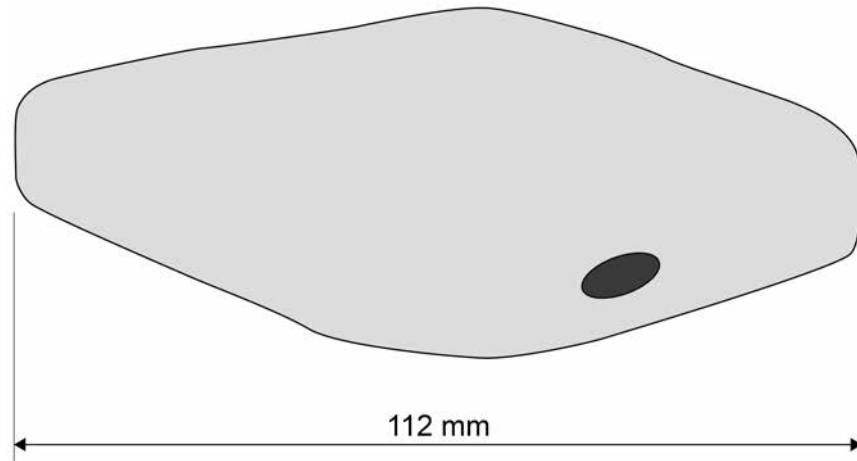
---



**0 1 . 5** The student made the necessary adjustments to get a clear image.

**Figure 3** shows the student's drawing of one of the cells.

**Figure 3**



The real length of the cell was 280 micrometres ( $\mu\text{m}$ ).

Calculate the magnification of the drawing.

**[3 marks]**

---



---



---



---



---

Magnification =  $\times$  \_\_\_\_\_

9

**Turn over for the next question**

**Turn over ►**



0 2

Coronary heart disease (CHD) is a non-communicable disease.

CHD is caused when fatty material builds up in the coronary arteries.

0 2 . 1

Explain what a non-communicable disease is.

[2 marks]

---

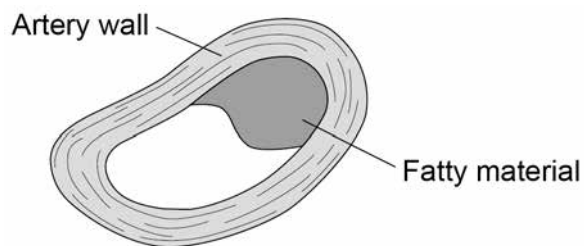
---

---

---

Figure 4 shows a coronary artery of someone with CHD.

Figure 4



0 2 . 2

Explain how CHD can cause a heart attack.

[3 marks]

---

---

---

---

---

---



0 2 . 3

Explain how lifestyle and medical risk factors increase the chance of developing CHD.  
**[6 marks]**

---

---

---

---

---

---

---

---

---

---

---

---

---

---

---

---

---

---

---

---

---

---

---

---

---

**11**

**Turn over for the next question**

**Turn over ►**



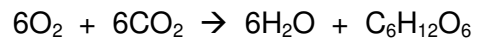
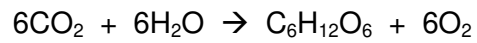
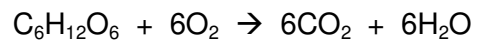
0 3

This question is about photosynthesis.

0 3 . 1

What is the correct balanced equation for photosynthesis?

[1 mark]

Tick **one** box.

0 3 . 2

What type of reaction is photosynthesis?

[1 mark]

Tick **one** box.

Aerobic

Endothermic

Exothermic

Oxidation

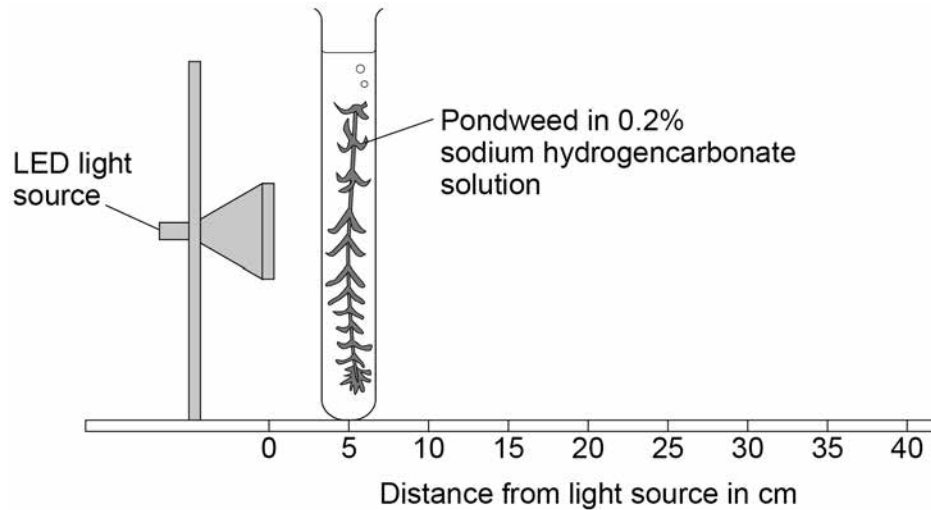




A student investigated the effect of light intensity on the rate of photosynthesis.

**Figure 5** shows the apparatus used.

**Figure 5**



Sodium hydrogencarbonate solution releases carbon dioxide gas for the pondweed.

This is the method used.

1. Place the pondweed at 5 cm from the light source.
2. Measure the rate of photosynthesis by counting the number of bubbles produced in 1 minute.
3. Repeat with the pondweed at 10 cm and at 20 cm from the light source.

**0 3 . 3**

Counting the number of bubbles produced in 1 minute is **not** an accurate way to measure the rate of photosynthesis.

Suggest **two** ways the method could be improved to measure the rate of photosynthesis more accurately.

**[2 marks]**

- 1 \_\_\_\_\_  
\_\_\_\_\_
- 2 \_\_\_\_\_  
\_\_\_\_\_

**Question 3 continues on the next page**

**Turn over ►**



0 3 . 4 The LED light source does **not** get hot.

Explain why it is important that the pondweed remains at a constant temperature.

[2 marks]

---

---

---

---

0 3 . 5 Light intensity can be calculated using the inverse square law:

$$I \propto \frac{1}{d^2}$$

Where  $I$  is light intensity and  $d$  is the distance of the pondweed from the light source.

The student placed the pondweed at 5, 10 and 20 cm from the light source.

Explain how light intensity changes as the distance of the pondweed from the light source is doubled.

You **must** include calculations in your answer.

[3 marks]

---

---

---

---

---

---

---



**0 3 . 6** The student's results are shown in **Table 1**

**Table 1**

<b>Distance of the pondweed from the light source in cm</b>	<b>Number of bubbles produced in 1 minute</b>
5	129
10	31
20	8

Predict how many bubbles of gas would be produced in 1 minute if the pondweed was placed 40 cm from the light source.

Give a reason for your prediction.

**[2 marks]**

---



---



---



---

**0 3 . 7** Describe how the student could change the method to investigate the effect of carbon dioxide concentration on the rate of photosynthesis.

You should include:

- how to change the independent variable
- **two** control variables.

Use **Figure 5** on page 9 to help you answer this question.

**[3 marks]**

---



---



---



---



---



---



0 4

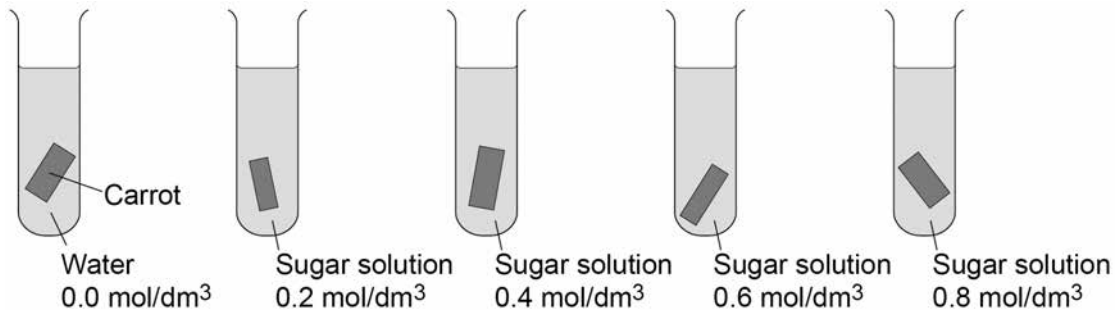
A student investigated the effect of different concentrations of sugar solution on pieces of carrot.

This is the method used.

1. Weigh five pieces of carrot.
2. Place each piece into a different tube.
3. Into each tube add 20 cm<sup>3</sup> of water or one of the sugar solutions as shown in **Figure 6**
4. Leave the apparatus for 2 hours.
5. Remove the carrot and dry each piece on paper towel.
6. Reweigh each piece.
7. Calculate the percentage (%) change in mass of each piece.

**Figure 6** shows how the investigation was set up.

**Figure 6**



**Table 2** shows the results.

**Table 2**

Concentration of sugar solution in mol/dm <sup>3</sup>	Percentage (%) change in mass
0.0	+24
0.2	+12
0.4	+1
0.6	-8
0.8	-15

0 4 . 1

Suggest why the student calculated the percentage (%) change in mass of each piece of carrot.

[1 mark]

---



---

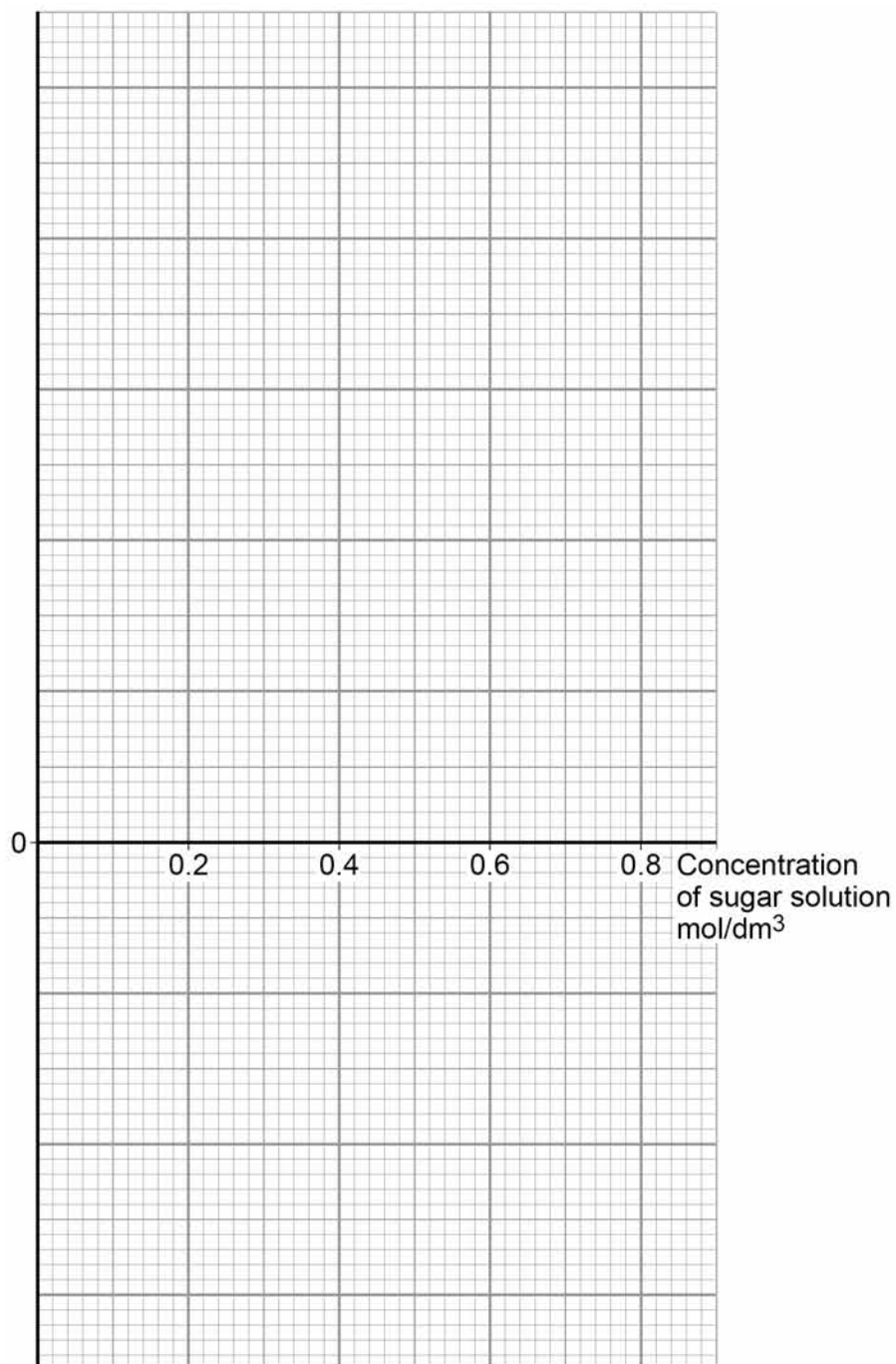


**0 4 . 2** Complete **Figure 7** using the results in **Table 2**

- Choose a suitable scale and label for the y-axis.
- Plot the results.
- Draw a line of best fit.

**[4 marks]**

**Figure 7**



**Question 4 continues on the next page**

**Turn over ►**



**0 4 . 3** Estimate the concentration of sugar solution inside the carrot cells.

Use your completed graph on **Figure 7**

**[1 mark]**

Concentration = \_\_\_\_\_ mol/dm<sup>3</sup>

**0 4 . 4** Explain why the mass of the carrot in the 0.6 mol/dm<sup>3</sup> sugar solution changed.

**[4 marks]**

---

---

---

---

---

---

---

---

---

---

**0 4 . 5** The student repeated the investigation using boiled pieces of carrot.

The pieces of carrot did **not** change in mass.

Suggest why.

**[1 mark]**

---

---



0 5

Measles is a serious disease. A person can die from measles.

**Table 3** shows the number of medically confirmed cases of measles in England and Wales between 2012 and 2015

**Table 3**

Year	Number of medically confirmed cases of measles
2012	2030
2013	1843
2014	121
2015	91

0 5 . 1

Suggest **one** reason why the actual number of cases of measles in England and Wales might be higher than is shown in **Table 3**

[1 mark]

---



---

0 5 . 2

Calculate the percentage decrease in the number of medically confirmed cases of measles between 2012 and 2015

[2 marks]

---



---



---



---

Percentage decrease = \_\_\_\_\_ %

**Question 5 continues on the next page**

**Turn over ►**



0 5 . 3

One reason for the decrease in the number of cases of measles is that more children were vaccinated against the disease.

Vaccinating a large proportion of the population reduces the spread of the measles virus.

Explain why.

[2 marks]

---



---



---

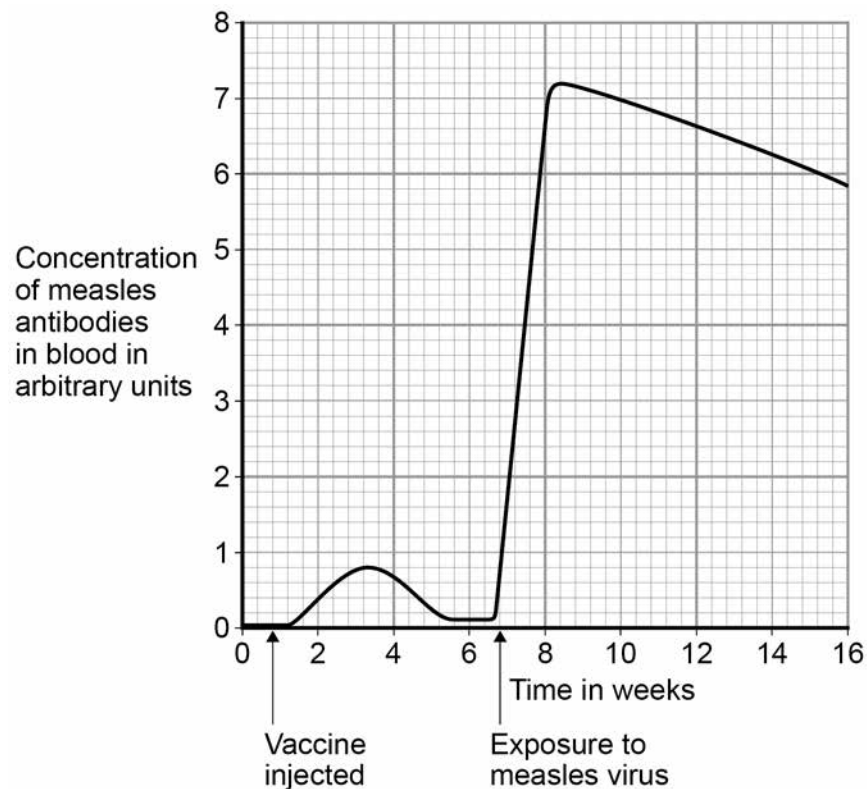


---

0 5 . 4

Figure 8 shows the concentration of measles antibodies in the blood of a boy.

Figure 8





Explain the differences between antibody production after the vaccine injection and after exposure to the measles virus.

You should include data from **Figure 8**

[6 marks]

---



---



---



---



---



---



---



---



---



---



---



---



---



---



---



---



---



---



---



---



---



---

11

Turn over for the next question

Turn over ►



**There are no questions printed on this page**

*Do not write  
outside the  
box*

**DO NOT WRITE ON THIS PAGE  
ANSWER IN THE SPACES PROVIDED**



**0 6**

This question is about stem cells.

**0 6 . 1**Give **one** place in a plant where stem cells are found.**[1 mark]**

---

---

**0 6 . 2**What is **one** economic use of plant stem cells?**[1 mark]**Tick **one** box.

To create genetically modified crops

To create new species of plants

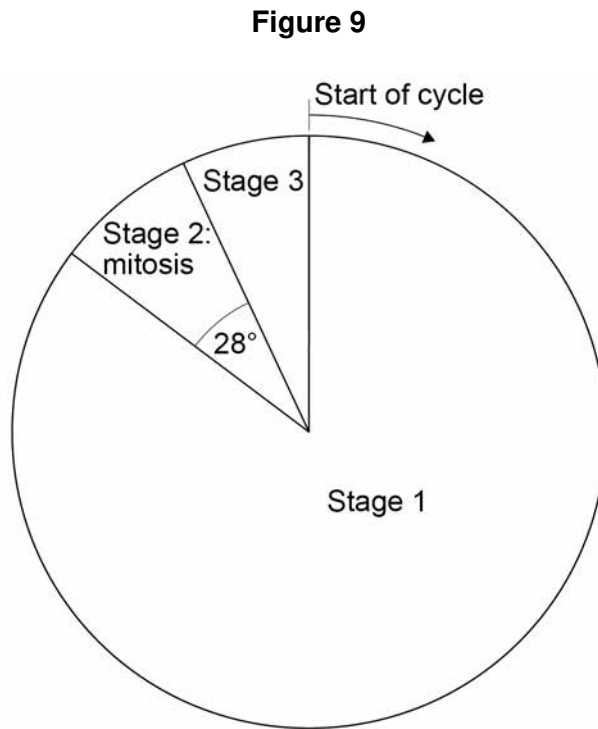
To increase variation in plants

To produce large numbers of identical plants

**Question 6 continues on the next page****Turn over ►**

Embryonic stem cells divide by mitosis.

**Figure 9** represents a cell cycle for a human embryonic stem cell.



**0 6 . 3** The mass of DNA in the cell at the start of the cycle is 6 picograms.

A picogram is  $10^{-3}$  nanograms.

Convert 6 picograms to grams.

Give your answer in standard form.

**[1 mark]**

---



---

Mass = \_\_\_\_\_ g



**0 6 . 4**

The time taken for this complete cell cycle is 15 hours.

Calculate how many hours the cell spent in mitosis.

Give your answer to 3 significant figures.

**[2 marks]**

---

---

---

---

Time spent in mitosis = \_\_\_\_\_ hours

**0 6 . 5**

Describe what happens in each of the three stages of the cell cycle.

**[5 marks]**

---

---

---

---

---

---

---

---

---

---

---

---

---

---

---

---

---

---

---

---

---

---

---

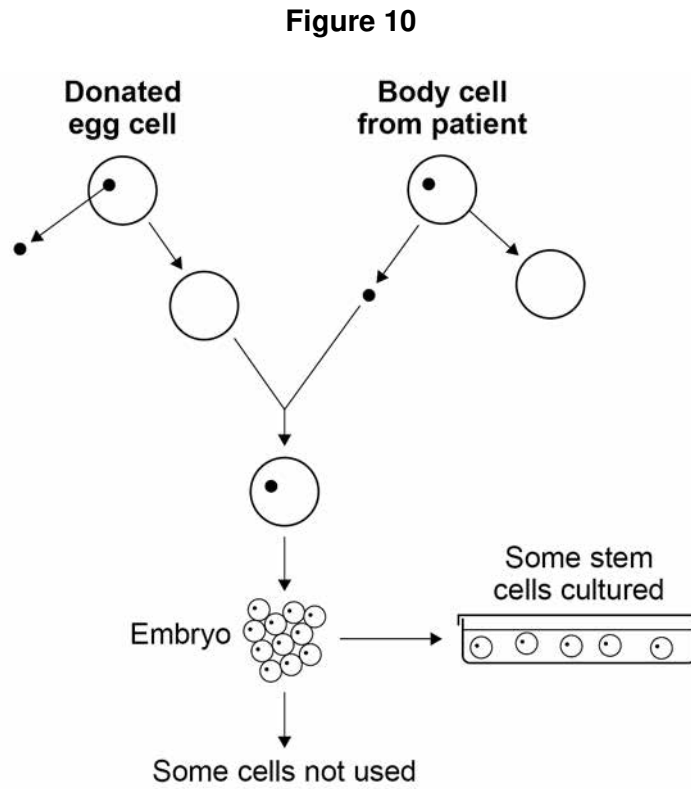
---

**Question 6 continues on the next page**

**Turn over ►**

0 6 . 6

**Figure 10** shows how embryonic stem cells are produced in therapeutic cloning for use in patients.



Give **two** advantages and **two** disadvantages of therapeutic cloning in medical treatments.

Use **Figure 10** to help you.

**[4 marks]**

Advantage 1 \_\_\_\_\_

\_\_\_\_\_

Advantage 2 \_\_\_\_\_

\_\_\_\_\_

Disadvantage 1 \_\_\_\_\_

\_\_\_\_\_

Disadvantage 2 \_\_\_\_\_

\_\_\_\_\_

**END OF QUESTIONS**



**There are no questions printed on this page**

*Do not write  
outside the  
box*

**DO NOT WRITE ON THIS PAGE  
ANSWER IN THE SPACES PROVIDED**



**There are no questions printed on this page**

*Do not write  
outside the  
box*

**DO NOT WRITE ON THIS PAGE  
ANSWER IN THE SPACES PROVIDED**

**Copyright information**

For confidentiality purposes, from the November 2015 examination series, acknowledgements of third party copyright material will be published in a separate booklet rather than including them on the examination paper or support materials. This booklet is published after each examination series and is available for free download from [www.aqa.org.uk](http://www.aqa.org.uk) after the live examination series.

Permission to reproduce all copyright material has been applied for. In some cases, efforts to contact copyright-holders may have been unsuccessful and AQA will be happy to rectify any omissions of acknowledgements. If you have any queries please contact the Copyright Team, AQA, Stag Hill House, Guildford, GU2 7XJ.

Copyright © 2018 AQA and its licensors. All rights reserved.

